

# What is a...



## LUMISmile® Digital Smile Makeover

The LumiSmile service provides you with a before and after photo of the proposed outcome of LUMINEERS, one of the fastest growing minimally-invasive procedures in dentistry. The visual depiction profoundly impacts our communication and shows the dramatic changes that can be attained with Lumineer Porcelain Veneers on your smile.

### The LumiSmile Process:

- You are photographed with a digital SLR camera (using good photography principles).
- Our practice sends the photograph to Lumineer Smile Design artists via Secure Internet Portal.
- Within 20 minutes, the our practice receives an email with the LUMISmile images.
- Our practice prints out the before and after photographs and places them in a professional Lumismile folder.
- Dr. Wood presents the LUMISmile to you while you are still in the practice and discusses how the we can help your smile.

You will leave our practice with a tangible, professional visual depiction of your potential smile to share with family and friends.

The goal of the LumiSmile system is to empower our patients to make an informed decision on changing their lives with a smile; it is an emotional and financial decision that often takes time and this new system provides the imaging information for you to see the dramatic possibilities.



## Picture

your perfect smile. . today.

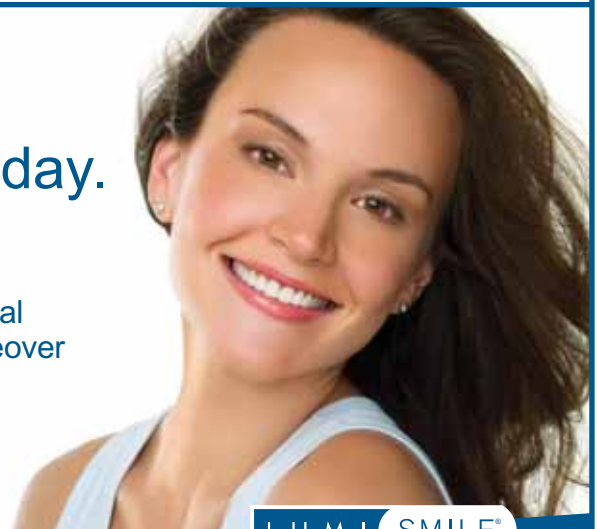
Introducing  
the Next Generation  
LUMISmile® Digital  
Smile Makeover

**Robin F. Wood, DDS**  
& Associates, LLC

909 E. Centennial, Suite 4 • Pittsburg, Kansas

**620.232.1000**

[www.wooddds.com](http://www.wooddds.com)



LUMI SMILE®  
BY LUMINEERS®

See what your smile could look like with straight, **beautiful-shaped, white** teeth.  
You can see what it looks like today with a quick visit to our office.